

SPIROL®

PIN INSTALLATION TECHNOLOGY

Model PM Manual Pin Inserter

This exceptionally versatile tool is ideally suited to all levels of production: from a single unit for prototype assembly, to multiple units on an assembly line. The **Model PM** easily accommodates quick change-overs. The part holding device (fixture) is simply replaced from the base of the machine. The pin diameter is easily changed, positive pin depth easily adjusted, and part size variation easily accommodated. The use of high-tech shafting and bearings results in smooth operation, precise positioning, repeatability, and durability.

Design Features/Benefits:

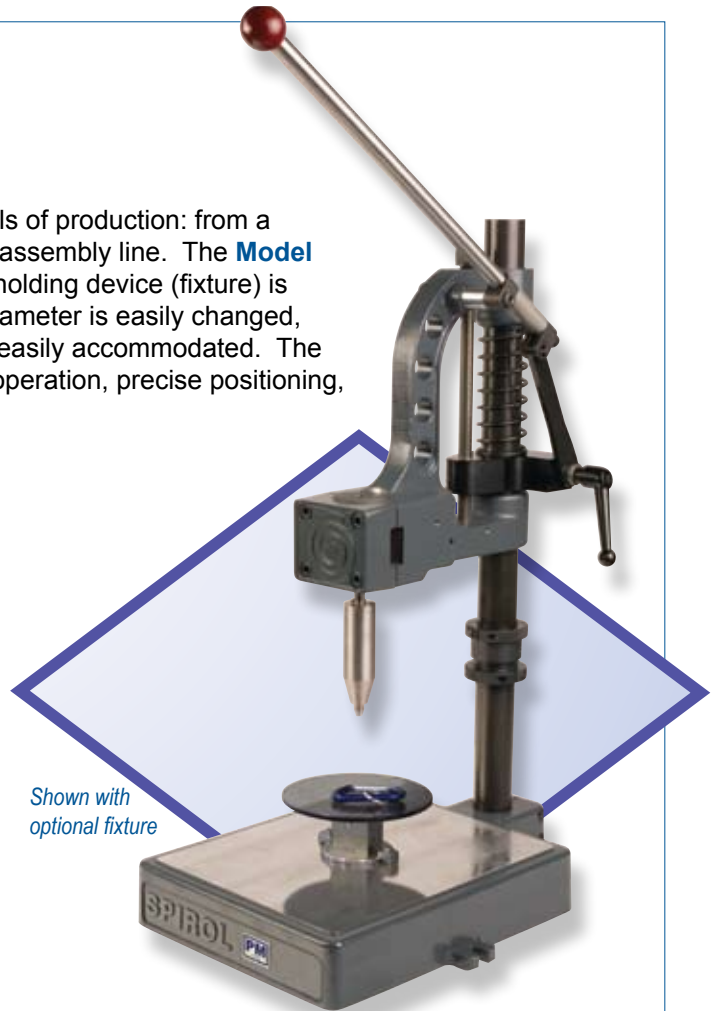
- Easy:** - Simple to operate and easily adjustable
- Accurate:** - Base plate is pre-drilled for simple and precise fixture location
- Reliable:** - Post mount style frame is sturdy, lightweight and portable
- Versatile:** - Installs pins ranging in diameter from 0.8 mm to 4 mm, and 1/32" to 5/32" unified
- Easy tooling changeover to accommodate a variety of applications
- Capacities:** - 200 lbs. maximum insertion force
- Vertical adjustment: 0-178 mm (7")
- Fixed throat dimension: 185 mm (7.5")
- Stroke: 76 mm (3")

Simple Operation:

1. Load the part to be pinned into an alignment fixture
2. Manually insert a pin into the spring-loaded jaws of the pin-driving chuck
3. Pull the lever until the unit reaches a finely adjustable pre-set stop
4. Release the lever
5. Unload the finished assembly

Optional alignment fixtures available.

Automated machines are also available from SPIROL.

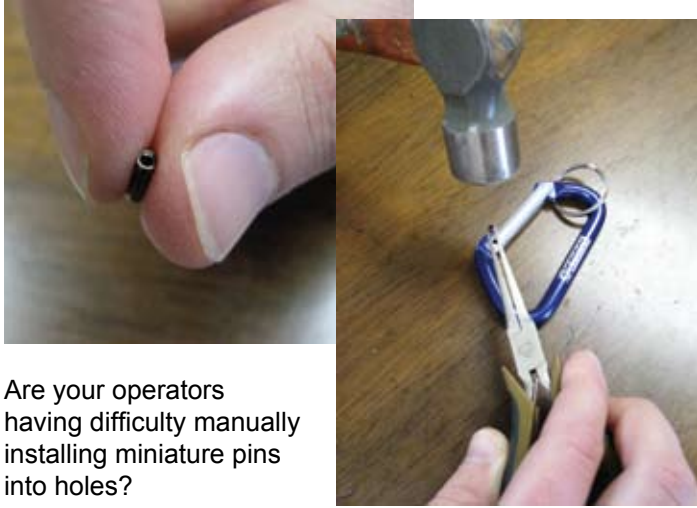


Easily accommodates all
SPIROL Pin-Driving Chucks:
SPD-101, CXA, CXD



SPIROL®

Installation Made Easy



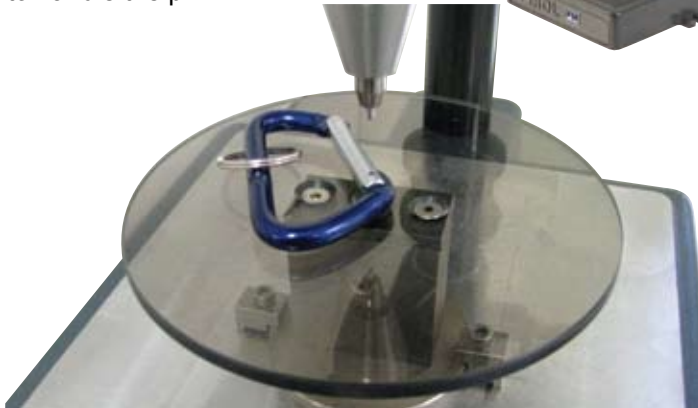
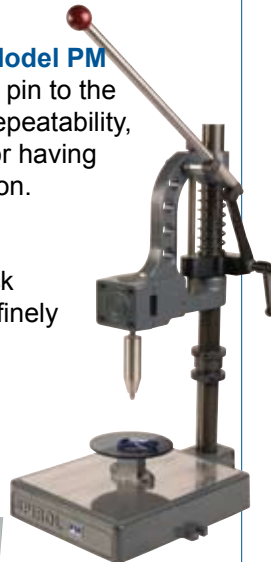
Are your operators having difficulty manually installing miniature pins into holes?

Are you experiencing an unacceptable percentage of damaged parts or other quality issues resulting from the installation process?

A significant advantage of the **SPIROL Model PM Manual Pin Inserter** is that it delivers the pin to the installation site with precise positioning, repeatability, and smooth operation without the operator having to struggle to hold the pin during installation.

Operators manually insert a pin into the spring-loaded jaws of the pin-driving chuck and pull the lever until the unit reaches a finely adjustable pre-set stop.

For very small pins, please consider the use of a SPIROL PR machine to eliminate the need for the operator to handle the pin.



Alignment fixtures are designed to accommodate customer products.

U.S.A. **Spirol International Corporation**
30 Rock Avenue
Danielson, Connecticut 06239
Tel. 860.774.8571 Fax 860.774.2048

Spirol West Inc.
1950 Compton Avenue, Unit 111
Corona, California 92881-6471
Tel. 951.273.5900 Fax 951.273.5907

**Spirol International Corporation
Shim Division**
321 Remington Road
Stow, Ohio 44224
Tel. 330.920.3655 Fax 330.920.3659

Spirol Distribution
30 Rock Avenue
Danielson, Connecticut 06239
Tel. 800.321.4679 Fax 860.774.0487
(For Distributor Customers)

Canada **Spirol Industries, Ltd.**
3103 St. Etienne Boulevard
Windsor, Ontario
Canada N8W 5B1
Tel. 519.974.3334 Fax 519.974.6550

Mexico **Spirol México, S.A. de C.V.**
Carretera a Laredo KM 16.5 Interior E
Col. Moisés Saenz
Apodaca, N.L. 66613 México
ó Apdo. Postal 151 de Apodaca, N.L.
Tel. (81) 8385 4390 Fax (81) 8385 4391

Europe **Spirol Industries, Ltd.**
Princeton Road
Corby, Northants
England NN17 4ET
Tel. 44 (0) 1536 444800
Fax 44 (0) 1536 203415
(For Distributor Customers)
Tel. 44 (0) 8003 890034

Spirol SAS
Rue Henri Rol Tanguy
Z.A. Les Naux
51450 Bétheny
France
Tel. 33 (0)3 26 36 31 42
Fax 33 (0)3 26 09 19 76

Spirol GmbH
Briener Strasse 9
80333 Munich
Germany
Tel. 49 (0) 931 454 670 74
Fax. 49 (0) 931 454 670 75

Asia Pacific **Spirol International Engineered
Fastener Trading Co. Ltd.**
No. 11 Xi Ya Rd. North
Section A, 1F, Building 14
Wai Gao Qiao Free Trade Zone
Shanghai, China 200131
Tel. (8621) 5046 1451/1452
Fax (8621) 5046 1540

e-mail: info@spirol.com

SPIROL.com

Challenge Us!

Request a free **SPIROL Automation CD-ROM** that demonstrates the Pin Inserters in operation, presents their versatility, and lists cost-effective options available for your application.